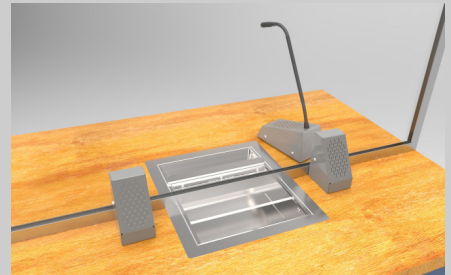




# STS-K002

## Speech Transfer System and Hearing Loop



### Applications

For use where one to one communication takes place such as:

- › Banks
- › Post offices
- › Theaters
- › Information Centers
- › Public Transit Systems
- › Ticket Counters
- › Embassies
- › Government Buildings

### Standards

- › CE, ROHS and WEEE compliant
- › BS EN 60118-4, in correct installations

## PRODUCT INFORMATION

The STS-K002 Speech Transfer System provides assistance for clear communication where normal speech is impaired by use of glass, a security screen or other similar barriers.

Components:

- › STS-A31H, Hearing Loop and Duplex Audio Communication Amplifier
- › STS-SU1, Staff Unit Speaker and Microphone
- › STS-S60, Customer Surface Mounted Speaker
- › STS-M54, Customer Surface Mounted Microphone
- › IL-AE99, Under the Counter Hearing Loop Aerial
- › PS-55, Power Supply

### Physical Data (boxed)

Dimensions	Height – 5.12" Width – 13.39" Depth – 9.45"
Weight	5.42lbs
Construction	Metalwork - Mild Steel STS-A31H - ABS Plastic Housing
Finish Options	Powder Coated  <div style="display: flex; align-items: center;"> <div style="width: 15px; height: 15px; background-color: #808080; margin-right: 5px;"></div> <span>Grey Leatherette</span> </div> <div style="display: flex; align-items: center; margin-top: 5px;"> <div style="width: 15px; height: 15px; background-color: #333; margin-right: 5px;"></div> <span>Black Textured</span> </div>



Phone: (727) 260-3488  
 Email: [jim@completehearingolutions.org](mailto:jim@completehearingolutions.org)  
[www.CompleteHearingSolutions.org](http://www.CompleteHearingSolutions.org)

## Physical and Technical Data (Individual Parts)

Components	Physical Data	Technical Data	
<b>STS A31</b> Hearing Loop and Duplex Audio Communication Amplifier	Dimensions: Height - 1.58" Width - 4.58" Depth - 4.50"  Weight: 0.32lbs Construction: ABS Plastic Housing Finish: Matt Black, Fine Texture	Supply Voltage	12-14 VDC
		Quiescent Current	100mA typical
		Operating Current	2A typical on speech peaks
		Power Switch	Push on - push off (tact switch under membrane)
		Microphones	Electret, supply 5V via 2.2K load resistor
		Speaker Output Power	RMS: 2.5W / 8 Ω 4.4W / 4 Ω
		Loop Drive Compliance	Constant current, bounded by 4V RMS & 3A RMS
		Total Harmonic Distortion	<5% (loop and speakers)
<b>STS-SU1</b> Staff Unit Speaker and Microphone	Dimensions: Height of base - 2.61" Height from bottom of base to top of microphone fully extended - 14.50" Width - 3.80" Depth - 6.02"  Weight: 1.79lbs Construction: Mild Steel Finish: Powder Coated Grey Leatherette or Black Textured	<b>Speaker</b>	
		RMS	5W
		Impedance	4 Ω
		Output	SPL 1W @ 1M 85dB
		Frequency Response	150Hz - 10300Hz
		<b>Microphone</b>	
		Directional Response	Cardioid
		Sensitivity	49.5dB+ 2dB @ 1kHz (0dB=1V/pa)
		Impedance	1.6K Ohms+ 3-% @ 1kHz
		Frequency Response	150Hz - 10500Hz
<b>STS-S60</b> Surface Mounted Speaker  <b>STS-M54</b> Surface Mounted Microphone	Dimensions for both STS-S61 and STS-M56: Height - 4.26" Width - 2.37" Depth - 2.93"  STS-S60 Weight: 1.23lbs STS-M54 Weight: 1.04lbs Construction: Mild Steel Finish: Powder Coated Grey Leatherette or Black Textured	<b>Speaker (STS-S60)</b>	
		RMS	5W
		Impedance	4 Ω
		Output	SPL 1W @ 1M 85dB
		Frequency Response	150Hz - 11000Hz
		<b>Microphone (STS-M54)</b>	
		Directional Response	Omni-Directional
		Sensitivity	-42.5 ± 2.0dB @ 1kHz (0dB=1V/pa)
		Impedance	2K Ohms =/- @ 1kHz
		Frequency Response	100Hz - 5000Hz
<b>PS-55</b> Power Supply	Dimensions: Height - 1.38" Width - 2.08" Depth - 3.92"  Cable length: 70.87" Weight: 0.51lbs Construction: ABS Case Finish: Black	Input	100-240V 50-60Hz 1A max
		Output	14V 2.14A 30W max
<b>IL-AE99</b> Loop Aerial	Dimensions: To be moulded on site to required size by installer Weight: 0.19lbs Construction: Copper wire with PVC casing Finish: Black		