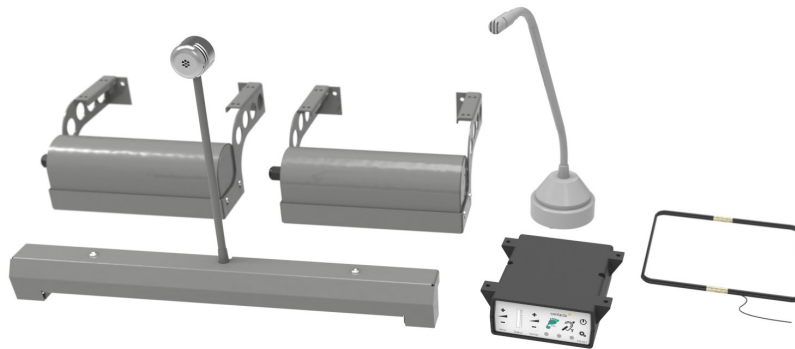




# STS-K015

## Speech Transfer System and Hearing Loop



CONTACTA SPEECH TRANSFER SYSTEMS

The STS-K015 Speech Transfer System provides assistance for clear communication where normal speech is impaired by use of glass, a security screen or other similar barriers.

Components:

- › STS-A31H, Housing
- › STAFFMIC-01-NWB, Staff Microphone
- › STS-B100, Customer Side Recessed Bridge Bar Unit with Anti-vandal Glass Mounted Microphone
- › RBS-DLSPK-MOD-2 (x2), Customer and Staff Side Recessed Speaker Module and Mounting Bracket
- › IL-AE99, Under the Counter Hearing Loop Aerial
- › PS-55, Power Supply

### Physical Data (boxed)

Dimensions	Height – 5.12" Width – 14.96" Depth – 12.60"
Weight	8.99lbs
Construction	Metalwork - Mild Steel STS-A31H - ABS Plastic Housing
Finish Options	Powder Coated RAL 9006



### Applications

For use where one to one communication takes place such as:

- › Banks
- › P
- › Theaters
- › Information Centers
- › Public Transit Systems
- › Ticket Counters
- › Embassies
- › Government Buildings

### Standards

- › CE, ROHS and WEEE compliant
- › BS EN 60118-4, in correct installations



Phone: (727) 260-3488

Email: jim@completehearingsolutions.org  
www.completehearingsolutions.org

## Physical and Technical Data (Individual Parts)

Components	Physical Data	Technical Data	
<b>STS A31H</b> Hearing Loop and Duplex Audio Communication	Dimensions: Height -1.58" Width - 4.58" Depth - 4.50"  Weight: 0.32lbs Construction: ABS Plastic Housing Finish: Matt Black, Fine Texture	Supply Voltage	12-14 VDC
		Quiescent Current	100mA typical
		Operating Current	2A typical on speech peaks
		Power Switch	act switch under membrane)
		Microphones	Electret, supply 5V via 2.2K load resistor
		Speaker Output Power	RMS: 2.5W / 8 Ω 4.4W / 4 Ω
		Loop Drive Compliance	Constant current, bounded by 4V RMS & 3A RMS
		Total Harmonic Distortion	<5% (loop and speakers)
<b>STAFFMIC-01-NWB</b> St Microphone	Dimensions: Height of base -1.78" Height from bottom of base to top of microphone fully extended - 14.00" Diameter of base - 2.74"  Weight: 2.05lbs Construction: Mild Steel Base Finish: Powder Coated RAL9006	Directional Response	Cardioid
		Sensitivity	49.5dB+ 2dB @ 1kHz (0dB=1V/pa)
		Impedance	1.6K Ω+ 3-% @ 1kHz
		Frequency Response	150Hz - 10500Hz
<b>RBS-DLSPK-MOD-2</b> Customer and St Side Overhead Speaker and Mounting Bracket	Dimensions of Speaker: Height - 2.50" Width - 3.87" Depth - 2.16" Dimensions of Bracket: Height at wall mount - 0.82" Width - 4.00" Depth: 5.75"  Weight: 1.40lbs/each Construction: Mild Steel Finish: Powder Coated RAL9006	RMS	5W
		Impedance	4 Ω
		Output	SPL 1W @ 1M 85dB
		Frequency Response	150Hz - 11000Hz
<b>STS-B100</b> Customer Side Recessed Bridge Bar with Anti-Vandal Glass Mounted Microphone	Recessed Bridge Bar Dimensions: Height - 1.72" Width - 15.75" Depth - 1.37" Construction: Mild Steel Finish: Powder Coated RAL9006  M14 Microphone Dimensions: Depth: 1.08" Diameter - 1.18" Construction: Aluminum Finish: Silver Anodised Total Height: 12.99" Weight: 1.14lbs	Directional Response	Cardioid
		Sensitivity	-47 ±3dB @ 1kHz
		Impedance	680 Ω +/- @1kHz
		Frequency Response	70Hz - 10300Hz
<b>PS-55</b> Power Supply	Dimensions: Height - 1.38" Width - 2.08" Depth - 3.92"  Cable length: 70.87" Weight: 0.51lbs Construction: ABS Case Finish: Black	Input	100-240V 50-60Hz 1A max
		Output	14V 2.14A 30W max
<b>IL-AE99</b> Loop Aerial	Dimensions: To be moulded on site to required size by installer Weight: 0.19lbs Construction: Copper wire with PVC casing Finish: Black		