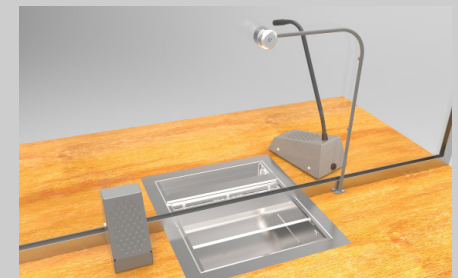




# STS-K058

## Speech Transfer System and Hearing Loop



CONTACTA SPEECH TRANSFER SYSTEMS

The STS-K058 Speech Transfer System provides assistance for clear communication where normal speech is impaired by use of glass, a security screen or other similar barriers.

Components:

- › STS-A31H, Hearing Loop and Duplex Audio Communication Amplifier
- › STS-SU1, Staff Unit Speaker and Microphone
- › STS-S60, Customer Surface Mounted Speaker
- › STS-M14-BENT, Customer Anti-Vandal Glass Mounted Microphone with Curved Tubing
- › IL-AE99, Under the Counter Hearing Loop Aerial
- › PS-55, Power Supply

### Physical Data (boxed)

Dimensions	Height – 6.30" Width – 11.81" Depth – 12.20"
Weight	5.51lbs
Construction	Metalwork - Mild Steel STS-A31H - ABS Plastic Housing
Finish Options	Powder Coated <input type="checkbox"/> Grey Leatherette <input checked="" type="checkbox"/> Black Textured

### Applications

For use where one to one communication takes place such as:

- › Banks
- › Post offices
- › Theaters
- › Information Centers
- › Public Transit Systems
- › Ticket Counters
- › Embassies
- › Government Buildings

### Standards

- › CE, ROHS and WEEE compliant
- › BS EN 60118-4, in correct installations



Phone: (727) 260-3488

Email: jim@completehearingsolutions.org

www.completehearingsolutions.org

## Physical and Technical Data (Individual Parts)

Components	Physical Data	Technical Data	
<b>STS-A31</b> Hearing Loop and Duplex Audio Communication Amplifier	Dimensions: Height - 1.58" Width - 4.58" Depth - 4.50"  Weight: 0.32lbs Construction: ABS Plastic Housing Finish: Matt Black, Fine Texture	Supply Voltage	12-14 VDC
		Quiescent Current	100mA typical
		Operating Current	2A typical on speech peaks
		Power Switch	Push on - push off (tact switch under membrane)
		Microphones	Electret, supply 5V via 2.2K load resistor
		Speaker Output Power	RMS: 2.5W / 8 Ω 4.4W / 4 Ω
		Loop Drive Compliance	Constant current, bounded by 4V RMS & 3A RMS
		Total Harmonic Distortion	<5% (loop and speakers)
<b>STS-SU1</b> Staff Unit Speaker and Microphone	Dimensions: Height of base - 2.61" Height from bottom of base to top of microphone fully extended - 14.50" Width - 3.80" Depth - 6.02"  Weight: 1.79lbs Construction: Mild Steel Grey Leatherette or Black Textured	<b>Speaker</b>	
		RMS	5W
		Impedance	4 Ω
		Output	SPL 1W @ 1M 85dB
		Frequency Response	150Hz - 10300Hz
		<b>Microphone</b>	
		Directional Response	Cardioid
		Sensitivity	49.5dB + 2dB @ 1kHz (0dB=1V/pa)
		Impedance	1.6K Ω + 3-% @ 1kHz
		Frequency Response	150Hz - 10500Hz
<b>STS-S60</b> Surface Mounted Speaker	Dimensions: Height - 4.26" Width - 2.37" Depth - 2.93"  Weight: 1.23lbs Construction: Mild Steel Grey Leatherette or Black Textured	RMS	5W
		Impedance	4 Ω
		Output	SPL 1W @ 1M 85dB
		Frequency Response	150Hz - 10300Hz
<b>STS-M14-BENT</b> Customer Anti-Vandal Glass Mounted Microphone with Curved Tubing	Dimensions of Microphone: Depth - 1.08" Diameter - 1.18" Tubing Height - 12.99" Tubing Width - 7.87"  Weight: 0.35lbs Mic Construction: Aluminum Mic Finish: Silver Anodised	Directional Response	Cardioid
		Sensitivity	-47 ±3dB @ 1kHz
		Impedance	680 Ω +/- @ 1kHz
		Frequency Response	70Hz - 10300Hz
<b>PS-55</b> Power Supply	Dimensions: Height - 1.38" Width - 2.08" Depth - 3.92"  Cable length: 70.87" Weight: 0.51lbs Construction: ABS Case Finish: Black	Input	100-240V 50-60Hz 1A max
		Output	14V 2.14A 30W max
<b>IL-AE99</b> Loop Aerial	Dimensions: To be moulded on site to required size by installer Weight: 0.19lbs Construction: Copper wire with PVC casing Finish: Black		